

Roundhill Farm

PHOTO ALBUM



This first photograph shows Roundhill Farm (circled) in its setting within the Strinesdale valley. The hills in the distance are the foothills of the Pennines: the Pennine Way is within easy reach of Roundhill Farm. We believe that this photograph was taken in 1991, since when considerable work has been carried out on the property, including extensions to the house and construction of the garage and stables. Roundhill Farm was the last property to be built on this hillside (in 1977) so the only difference between this photograph and one taken in 2009 would be the size and number of trees. No housing estates, no motorways, no road widening ...just trees (and broadband)!



Bottom field & boundary wall
April 2002



View towards Strinesdale from paddock
May 2009



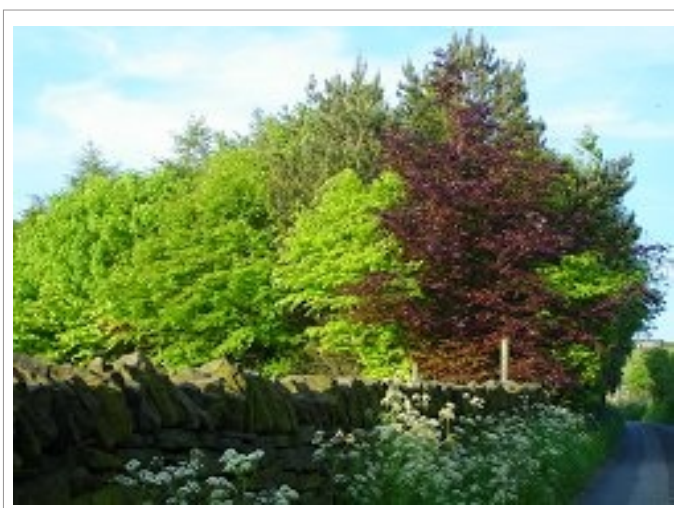
Bottom field towards paddock & stables
March 2007



Barn and trees from the paddock
March 2007



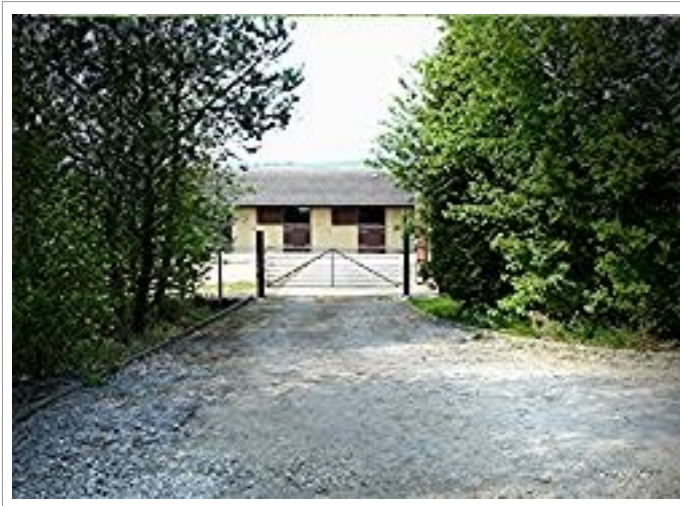
Stables & barn from Back o' th' Low Road
March 2007



Woodland from Back o' th' Low Road
May 2009



Front of the house from the stable yard
April 2007



Stable block from the drive entrance
April 2007



Stables & yard
June 2007



View north from Round Hill
(which gave the farm its name)
June 2007



Greenhouse
June 2007



View of the house from the drive
July 2007



Woodland at Roundhill
July 2007



Woodland at Roundhill
May 2009



Towards the Stables from the drive
July 2007



View North-east from Big Field
March 2007



Haymaking - Big Field
30 July 2007
(when the rain finally stopped!)



Big Field from Paddock
March 2007



Haymaking - Big Field
30 July 2007



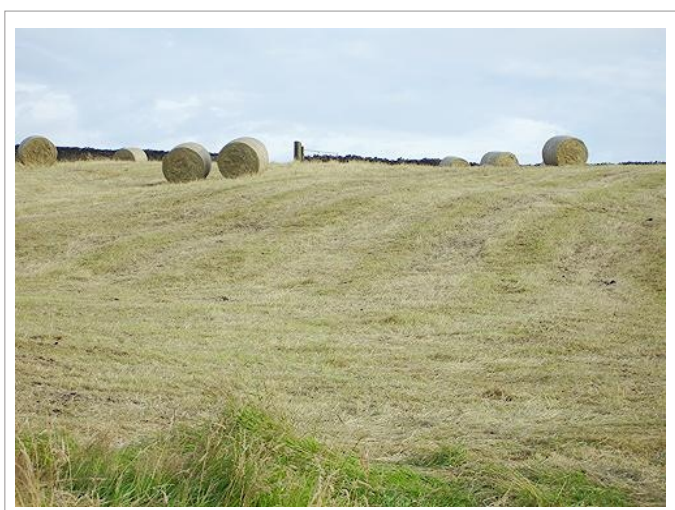
Haymaking - Paddock
30 July 2007



Haymaking - Paddock windrows
24 June 2007



Haymaking - Paddock
24 June 2009



Baling - Big Field
1 August 2007



Bringing in the bales
1 August 2007



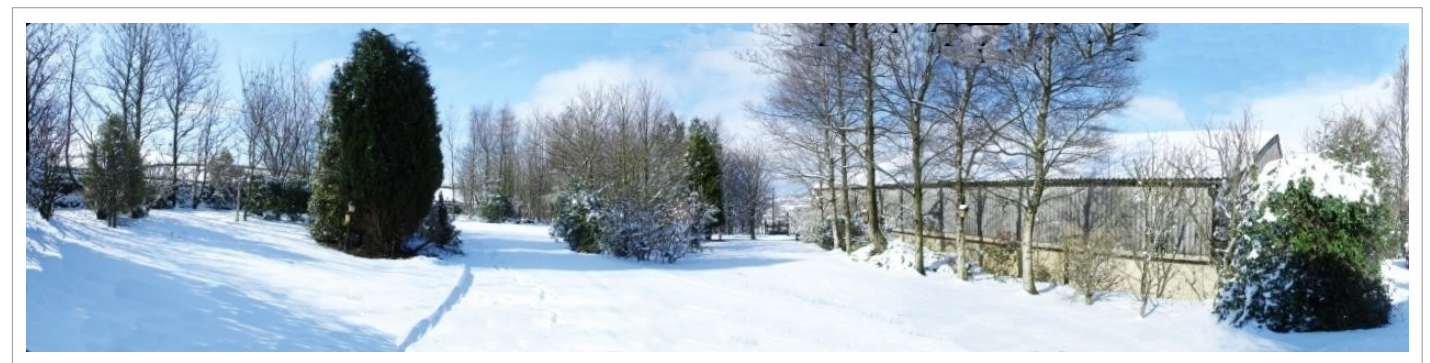
Strinesdale Country Park
August 2007



Strinesdale Country Park
August 2007



Our 7'6" Christmas Tree
December 2007



View from the house, Easter Sunday, 23 March 2008